

Prism Mold

DESCRIPTION:

The Prism Mold is manufactured of steel with hardness over HV400 the surface is heat-treated to comply with the related standards

TECHNICAL SPECIFICATIONS:

	Dimensions	Weight
CM 0140	40x40x160 mm	12.5 Kg
CM 0141	50x50x200 mm	8 Kg
CM 0142	25x25x250 mm	6 Kg
CM 0143	75x75x254 mm	9 Kg
CM 0144	25x25x285 mm	6 Kg



BS 3892-1; 4551-1; EN 196-1; 413-2; 459-2; 1744-1; 1015-10,11; 13454-2

ORDERING:

CM 0140
Prism mold 3 Gangs, 40x40x160mm

CM 0141
Prism mold 3 Gangs, 50x50x200mm

CM 0142
Prism mold 2 Gangs, 25x25x250mm

CM 0143
Prism mold 2 Gangs, 75x75x254mm

CM 0144
Prism mold 2 Gangs, 25x25x285mm

ACCESSORIES:

CM 0140-1
Steel inserts 6pcs

CM 0140-2
Feed hopper

CM 0140-3
Standard reference sand. EN 196-1 2006, 1350 gram per bag

Three Gang Cube Mold 50x50x50

DESCRIPTION:

The Three Gang Cube Mold is manufactured of cast iron all internal surfaces are machined. All the dimensions and specifications comply with the related standards.

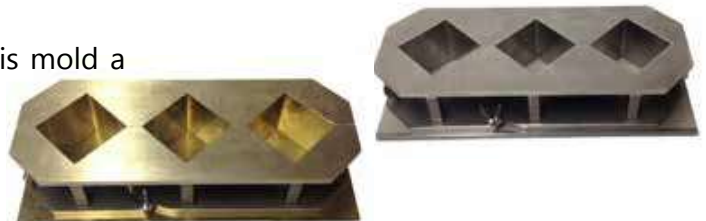
CM 0145 This case iron three gang mold is diagonal arrangement 50mm mortar cube, molds with a detachable brass base plate.

Wingnut clamp locks the mold to the base white stainless steel thumbscrews secure the halves tightly together.

The large screed of upper surface area makes this mold a preferred choice.

TECHNICAL SPECIFICATIONS:

	CM 0145
Dimensions	110x230x60 mm
Weight	3 Kg



BS 1881-131; ASTM C109; EN 196-1

ORDERING:

CM 0145
Three Gang Cube Mold 50x50x50 Brass

CM 0146
Three gang Cube Mold 50x50x50 stainless steel

Briquette Mold

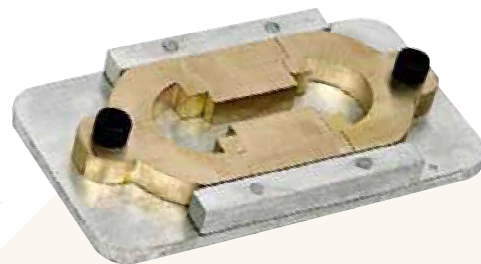
DESCRIPTION:

The briquette mold is used for casting cement briquettes for tensile strength testing. Manufactures of brass it is a two-part split mold with thumbscrews for quick assembly and dismantling of the mold.

The minimum cross-section of the briquettes cast is 25.4mm x 25.4mm. Supplied complete with a steel base plate.

TECHNICAL SPECIFICATIONS:

Product code	CM 0147
Dimensions	25.4x25.4 mm
Weight	2 Kg



BS 4450

ORDERING:

CM 0147
Briquette Mold