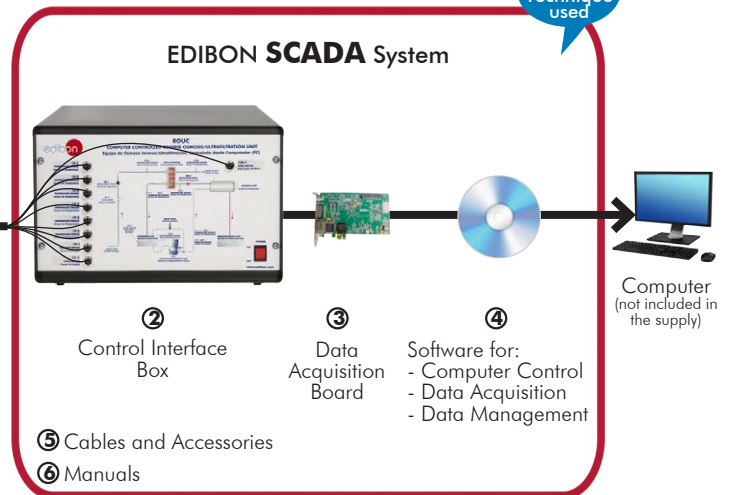




Teaching  
Technique  
used



\* Minimum supply always includes: 1 + 2 + 3 + 4 + 5 + 6  
(Computer not included in the supply)

① Unit: ROUC. Computer Controlled Reverse Osmosis/  
Ultrafiltration Unit

### Key features:

- **Advanced Real-Time SCADA.**
- **Open Control + Multicontrol + Real-Time Control.**
- **Specialized EDIBON Control Software based on LabVIEW.**
- **National Instruments Data Acquisition board (250 KS/s, kilo samples per second).**
- **Calibration exercises, which are included, teach the user how to calibrate a sensor and the importance of checking the accuracy of the sensors before taking measurements.**
- **Projector and/or electronic whiteboard compatibility allows the unit to be explained and demonstrated to an entire class at one time.**
- **Capable of doing applied research, real industrial simulation, training courses, etc.**
- **Remote operation and control by the user and remote control for EDIBON technical support, are always included.**
- **Totally safe, utilizing 4 safety systems (Mechanical, Electrical, Electronic & Software).**
- **Designed and manufactured under several quality standards.**
- **Optional ICAI software to create, edit and carry out practical exercises, tests, exams, calculations, etc. Apart from monitoring user's knowledge and progress reached.**
- **This unit has been designed for future expansion and integration. A common expansion is the EDIBON Scada-Net (ESN) System which enables multiple students to simultaneously operate many units in a network.**

**OPEN CONTROL  
+  
MULTICONTROL  
+  
REAL TIME CONTROL**



[www.edibon.com](http://www.edibon.com)

- PRODUCTS
- 11.-CHEMICAL ENGINEERING,
  - 12.-FOOD & WATER TECHNOLOGIES AND
  - 13.-ENVIRONMENT

For more information about Key Features, click here



ISO 9001: Quality Management (for Design, Manufacturing, Commercialization and After-sales service)



European Union Certificate (total safety)



Certificates ISO 14001 and ECO-Management and Audit Scheme (environmental management)



"Worlddidac Quality Charter" and Platinum Member of Worlddidac

## INTRODUCTION

Membrane filtration processes can be found among those processes that have evolved more during the last decades. Generally, they consist in forcing the flow of the liquid to be filtered through a membrane located on a solid support to purify it. The membrane permeability is determined by the size of the pores and acts as a barrier for the particles larger than the pores, while the rest of liquid can go freely through the membrane. The result is a clean and filtered fluid on one side of the membrane and the removed solution on the other side.

The need of increasingly larger permeate flows, generated at smaller working pressures, has supposed a constant advance in the design and manufacture of membranes.

The type of membrane will vary depending on the size of the particles to be separated from the liquid. Some possibilities are the filtration, microfiltration, ultrafiltration, nanofiltration and reverse osmosis ones.

All of them are processes consisting in the separation of different particles of a solution, given its measurement or osmotic concentration (salinity), through semipermeable membranes.

Membrane filtration is a physical separation through a semipermeable membrane that retains those particles larger than the pore diameter. The reverse osmosis consists in reversing the osmotic flow (treated effluent) through a semipermeable membrane by applying pressure. Thus, the solution is concentrated.

The Computer Controlled Reverse Osmosis/Ultrafiltration Unit, "ROUC", allows the practical study of the ultrafiltration and reverse osmosis techniques.

## GENERAL DESCRIPTION

The Computer Controlled Reverse Osmosis/Ultrafiltration Unit, "ROUC", performs a tangential flow filtration process, which is a system that prevents the formation of impurities sediments that reduces its capacity.

Two variable of the effluent must be known to perform reverse osmosis and ultrafiltration separation practical exercises:

- Chemical composition of the fluid.
- The membrane characteristics to know the most suitable one for the desired process.

A computer controlled three piston positive displacement pump impels the effluent to the membranes. The motor of the pump is controlled by a variable frequency drive for obtaining different flows in function of the required separation process. As it is a positive displacement pump the flow obtained will be directly proportional to the motor speed.

The pump supplies the effluent to both tubular membranes connected in series and lodged in a membrane module. The solution to be treated flows inside the tubes, the permeate flows radially from the inside to the outside of the tubes and the waste is obtained at the end of the tubes.

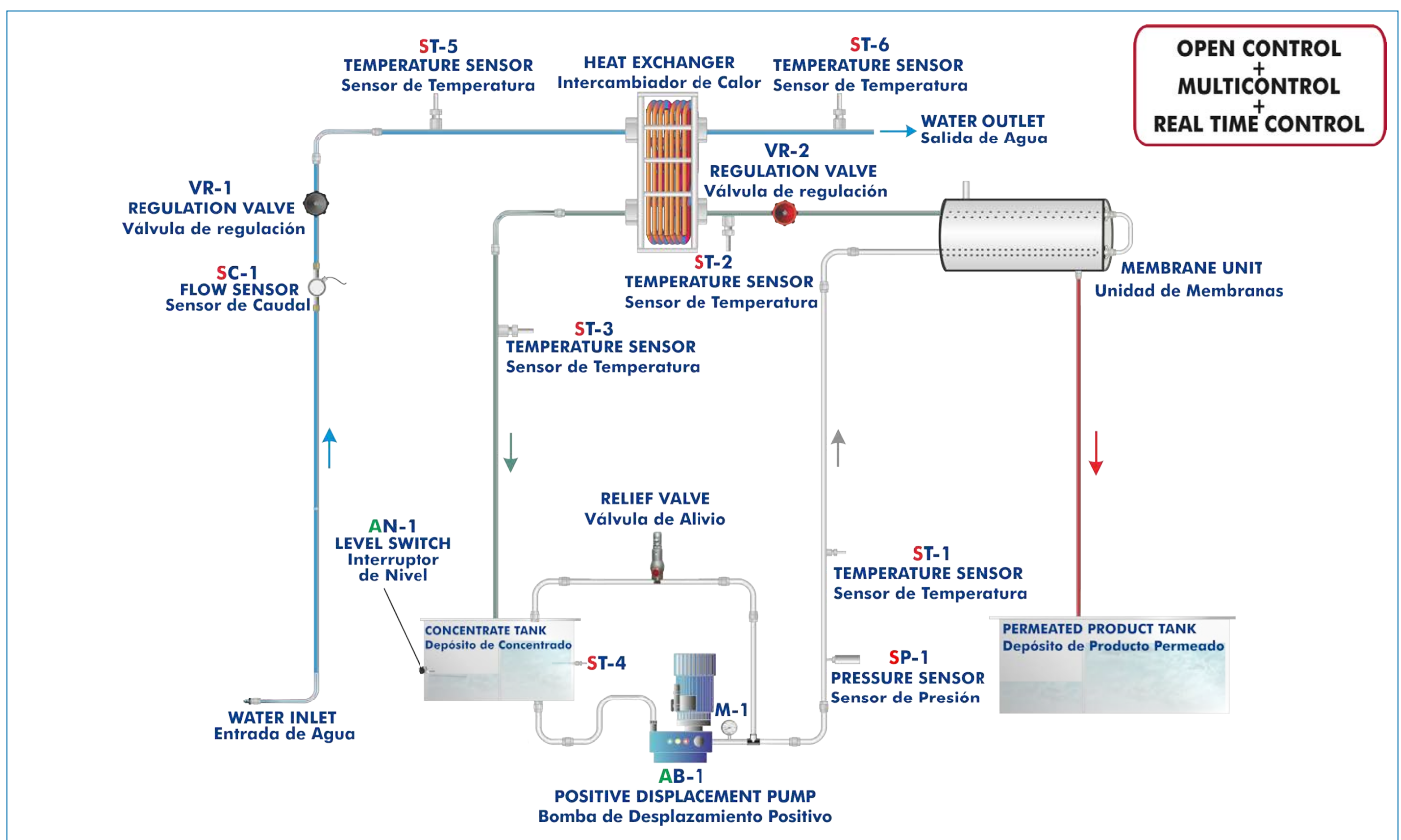
The effluent impelled by the pump will receive heat from it, increasing its temperature. The permeate will be collected in a final product tank. The concentrate will go back to the initial tank to be treated again as effluent, but due to the temperature rise this concentrate will flow through a plate heat exchanger.

Membranes with different weight cut-off points are included. They only differ in length and number from the ones installed in a real plant. This Computer Controlled Unit is supplied with the EDIBON Computer Control System (SCADA), and includes: The unit itself + a Control Interface Box + a Data Acquisition Board + Computer Control, Data Acquisition and Data Management Software Packages, for controlling the process and all parameters involved in the process.



ROUC detail

## PROCESS DIAGRAM AND UNIT ELEMENTS ALLOCATION



With this unit there are several options and possibilities:

- Main items: 1, 2, 3, 4, 5 and 6.
- Optional items: 7, 8, 9, 10 and 11.

Let us describe first the main items (1 to 6):

**① ROUC. Unit:**

Anodized aluminum frame and panels made of painted steel.  
 The unit includes wheels to facilitate its mobility.  
 Main metallic elements made of stainless steel.  
 Diagram in the front panel with distribution of the elements similar to the real one.  
 Rapid changeover from Reverse Osmosis to Ultrafiltration and back.  
 Easy cleaned and maintenance.

All elements in contact with the process fluid are constructed from hygienic design materials such as stainless steel, PTFE and silicone rubber.

**Stainless steel feed tank** (15 l approx. capacity).

**Computer controlled three head positive displacement feed pump:**

- Maximum flow: 38 l/min.
- Maximum design pressure: 150 bar; maximum operation pressure: 55 bar.
- This pump is used to feed product to the membrane module.
- Flow and pressure adjustable. Variable speed control.
- The pump has a relief valve to protect the unit.
- Frequency variator that controls the pump motor.

**Membrane module:**

- Two tubular membranes connected in series.
- Membrane diameter: 12.5 mm.
- Membrane area: 0.000122 m<sup>2</sup>.
- Tube volume: 75 ml.
- Maximum operation pressure: 55 bar.

**Two regulation valves to control the water flow and the effluent flow.**

**Plates heat exchanger for the concentrate.**

**Permeate stainless steel collecting tank** (15 l approx. capacity).

**Instrumentation:**

- Six temperature sensors, "J" type.
- Pressure sensor, range: 0 – 100 bar.
- Flow sensor (water inlet), range: 0.25 – 6.5 l/min.
- Level switch.

**Two membranes of each model of the following are supplied:**

- RO01: Retention Character (99% NaCl), Process: Reverse Osmosis, max. pressure (45 bar).
- UF02: Retention Character (20,000 Da), Process: Ultrafiltration, max. pressure (10 bar).
- UF03: Retention Character (200,000 Da), Process: Ultrafiltration, max. pressure (15 bar).

The complete unit includes as well:

- Advanced Real-Time SCADA.**
- Open Control + Multicontrol + Real-Time Control.**
- Specialized EDIBON Control Software based on LabVIEW.**
- National Instruments Data Acquisition board (250 KS/s, kilo samples per second).**
- Calibration exercises, which are included, teach the user how to calibrate a sensor and the importance of checking the accuracy of the sensors before taking measurements.**
- Projector and/or electronic whiteboard compatibility allows the unit to be explained and demonstrated to an entire class at one time.**
- Capable of doing applied research, real industrial simulation, training courses, etc.**
- Remote operation and control by the user and remote control for EDIBON technical support, are always included.**
- Totally safe, utilizing 4 safety systems (Mechanical, Electrical, Electronic & Software).**
- Designed and manufactured under several quality standards.**
- Optional ICAI software to create, edit and carry out practical exercises, tests, exams, calculations, etc. Apart from monitoring user's knowledge and progress reached.**
- This unit has been designed for future expansion and integration. A common expansion is the EDIBON Scada-Net (ESN) System which enables multiple students to simultaneously operate many units in a network.**



Unit: ROUC

**② ROUC/CIB. Control Interface Box:**

The Control Interface Box is part of the SCADA system.

**Control interface box with process diagram in the front panel** and with the same distribution that the different elements located in the unit, for an easy understanding by the student.

All sensors, with their respective signals, are properly manipulated from -10V. to +10V. computer output.

Sensors connectors in the interface have different pines numbers (from 2 to 16), to avoid connection errors.

Single cable between the control interface box and computer.

**The unit control elements are permanently computer controlled**, without necessity of changes or connections during the whole process test procedure.

**Simultaneous visualization in the computer of all parameters involved in the process.**

**Calibration of all sensors involved in the process.**

**Real time curves representation about system responses.**

Storage of all the process data and results in a file.

Graphic representation, in real time, of all the process/system responses.

**All the actuators' values can be changed at any time from the keyboard** allowing the analysis about curves and responses of the whole process.

All the actuators and sensors values and their responses are displayed on only one screen in the computer.

**Shield and filtered signals to avoid external interferences.**

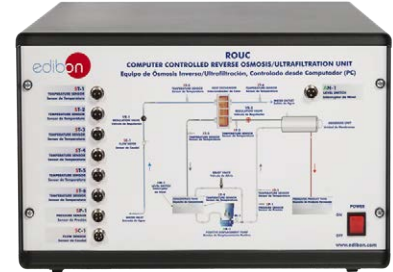
**Real time computer control with flexibility of modifications from the computer keyboard of the parameters, at any moment during the process.**

Real time computer control for pumps, compressors, heating elements, control valves, etc.

**Real time computer control for parameters involved in the process simultaneously.**

**Open control** allowing modifications, at any moment and in real time, of parameters involved in the process simultaneously.

**Three safety levels, one mechanical in the unit, another electronic in the control interface and the third one in the control software.**



ROUC/CIB

**③ DAB. Data Acquisition Board:**

The Data Acquisition board is part of the SCADA system.

PCI Express Data acquisition board (National Instruments) to be placed in a computer slot. Bus PCI Express.

**Analog input:**

Number of channels= 16 single-ended or 8 differential. Resolution= 16 bits, 1 in 65536.

**Sampling rate up to: 250 KS/s (kilo samples per second).**

Input range (V)= ±10 V. Data transfers=DMA, interrupts, programmed I/O. DMA channels=6.

**Analog output:**

Number of channels=2. Resolution= 16 bits, 1 in 65536.

Maximum output rate up to: 900 KS/s.

Output range(V)= ±10 V. Data transfers=DMA, interrupts, programmed I/O.

**Digital Input/Output:**

Number of channels=24 inputs/outputs. D0 or DI Sample Clock frequency: 0 to 100 MHz.

Timing: Number of Counter/timers=4. Resolution: Counter/timers: 32 bits.

**The Data Acquisition board model may change at any moment, providing the same or better features than those required for the unit.**



DAB

**④ ROUC/CCSOF. Computer Control + Data Acquisition + Data Management Software:**

The three softwares are part of the SCADA system.

Compatible with actual Windows operating systems. Graphic and intuitive simulation of the process in screen. **Compatible with the industry standards.**

Registration and visualization of all process variables in an automatic and simultaneous way.

**Flexible, open and multicontrol software**, developed with actual windows graphic systems, acting simultaneously on all process parameters.

**Management, processing, comparison and storage of data.**

**Sampling velocity up to 250 KS/s (kilo samples per second).**

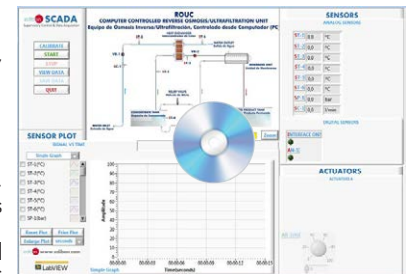
**Calibration system for the sensors involved in the process.**

**It allows the registration of the alarms state and the graphic representation in real time.**

Comparative analysis of the obtained data, after the process and modification of the conditions during the process.

**Open software, allowing the teacher to modify texts, instructions. Teacher's and student's passwords** to facilitate the teacher's control on the student, and allowing the access to different work levels.

**This unit allows the 30 students of the classroom to visualize simultaneously all the results and the manipulation of the unit, during the process, by using a projector or an electronic whiteboard.**



ROUC/CCSOF

**⑤ Cables and Accessories**, for normal operation.

**⑥ Manuals:**

This unit is **supplied with 8 manuals**: Required Services, Assembly and Installation, Interface and Control Software, Starting-up, Safety, Maintenance, Calibration & Practices Manuals.

\*References 1 to 6 are the main items: ROUC + ROUC/CIB + DAB + ROUC/CCSOF + Cables and Accessories + Manuals are included in the minimum supply for enabling normal and full operation.

## EXERCISES AND PRACTICAL POSSIBILITIES TO BE DONE WITH THE MAIN ITEMS

- |   |   |
|---|---|
| <p>1.- Practical training in ultrafiltration and reverse osmosis processing techniques.</p> <p>2.- Protein standardization in the production of fermented milk products such as concentration of skimmed milk for yogurt production.</p> <p>3.- Pre-concentration of milk for cheese manufacture.</p> <p>4.- Concentration of fruit juices.</p> <p>5.- Clarification of fruit juices.</p> <p>6.- Water potabilization.</p> <p>7.- Demonstration of the effect of varying the following process parameters on separation performance:</p> <ul style="list-style-type: none"> <li>- Process pressure.</li> <li>- Product flow rate.</li> <li>- Process temperature.</li> </ul> <p>Additional practical possibilities:</p> <p>8.- Sensors calibration.</p> <p>9.- Applications of concentration, clarification, fractionation and standardization of milk, fruit juices, vegetables juices, etc.</p> <p>10.-Treatment of effluent.</p> <p>11.-Membrane cleaning and maintenance.</p> <p>12.-Enzyme, antibiotics and organic acids' recovery in permeate.</p> <p>Other possibilities to be done with this Unit:</p> <p>13.-Many students view results simultaneously.</p> <p style="padding-left: 20px;">To view all results in real time in the classroom by means of a projector or an electronic whiteboard.</p> | <p>14.-Open Control, Multicontrol and Real Time Control.</p> <p style="padding-left: 20px;">This unit allows intrinsically and/or extrinsically to change the span, gains; proportional, integral, derivative parameters; etc, in real time.</p> <p>15.-The Computer Control System with SCADA allows a real industrial simulation.</p> <p>16.-This unit is totally safe as uses mechanical, electrical and electronic, and software safety devices.</p> <p>17.-This unit can be used for doing applied research.</p> <p>18.-This unit can be used for giving training courses to Industries even to other Technical Education Institutions.</p> <p>19.-Control of the ROUC unit process through the control interface box without the computer.</p> <p>20.-Visualization of all the sensors values used in the ROUC unit process.</p> <ul style="list-style-type: none"> <li>- By using PLC-PI additional 19 more exercises can be done.</li> <li>- Several other exercises can be done and designed by the user.</li> </ul> |
|---|---|

### REQUIRED SERVICES

- |  |
|--|
| <ul style="list-style-type: none"> <li>- Electrical supply: three-phase, 380 V/50 Hz or 220 V/60 Hz.</li> <li>- Water supply and drainage.</li> <li>- Computer.</li> </ul> |
|--|

### DIMENSIONS AND WEIGHTS

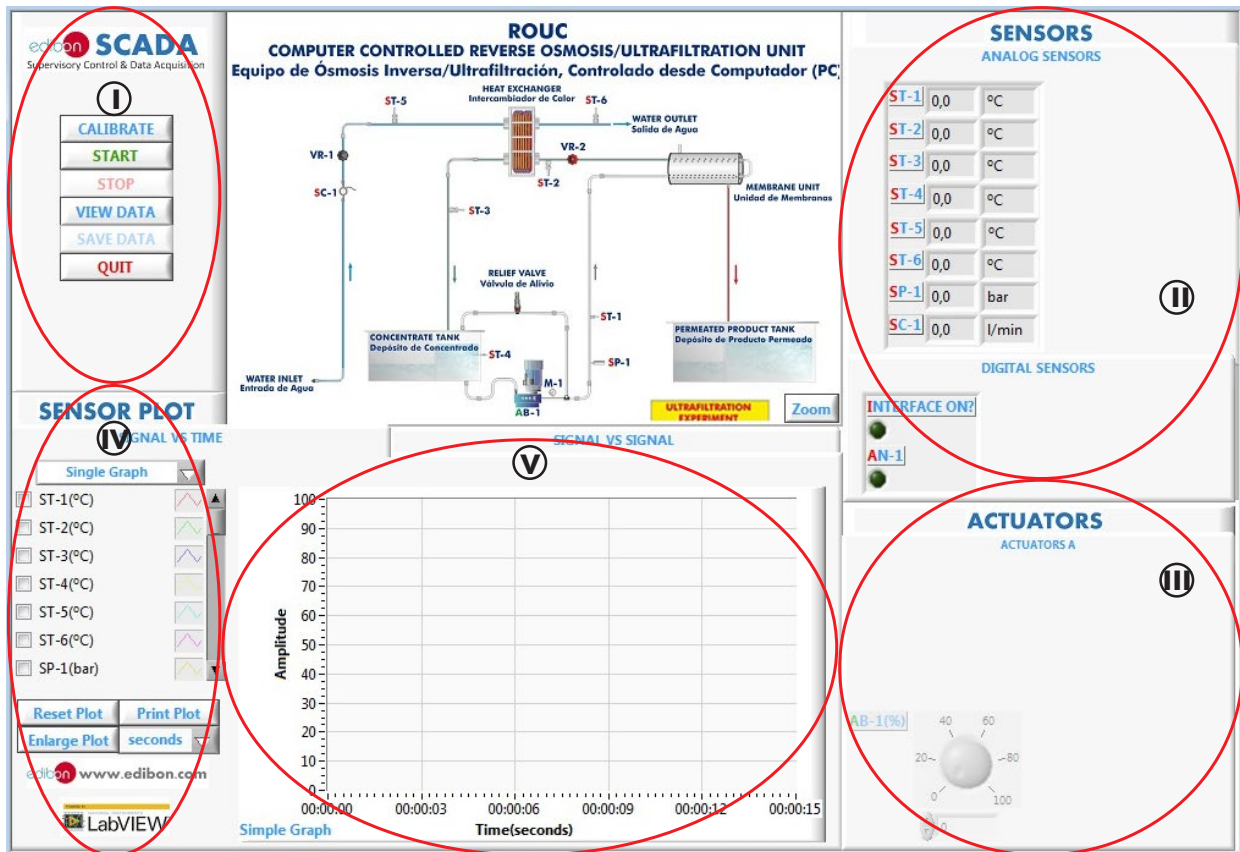
- |   |
|---|
| <p>ROUC:</p> <p style="padding-left: 20px;">Unit:</p> <ul style="list-style-type: none"> <li>-Dimensions: 800 x 800 x 1000 mm approx.<br/>(31.50 x 31.50 x 39.37 inches approx.)</li> <li>-Weight: 165 Kg approx.<br/>(363 pounds approx.)</li> </ul> <p style="padding-left: 20px;">Control-Interface Box:</p> <ul style="list-style-type: none"> <li>-Dimensions: 490 x 330 x 310 mm approx.<br/>(19.29 x 12.99 x 12.2 inches approx.)</li> <li>-Weight: 10 Kg approx.<br/>(22 pounds approx.)</li> </ul> |
|---|

### ADDITIONAL RECOMMENDED ELEMENTS (Not included)

- |  |
|--|
| <ul style="list-style-type: none"> <li>- ROUC-MEM. Spare Membranes Set:</li> </ul> <p style="padding-left: 20px;">The set includes 18 membranes:</p> <ul style="list-style-type: none"> <li>- Six membranes of RO01: Retention Character (99% NaCl), Process: Reverse Osmosis, max. pressure (45 bar).</li> <li>- Six membranes of UF02: Retention Character (20,000 Da), Process: Ultrafiltration, max. pressure (10 bar).</li> <li>- Six membranes of UF03: Retention Character (200,000 Da), Process: Ultrafiltration, max. pressure (15 bar).</li> </ul> |
|--|

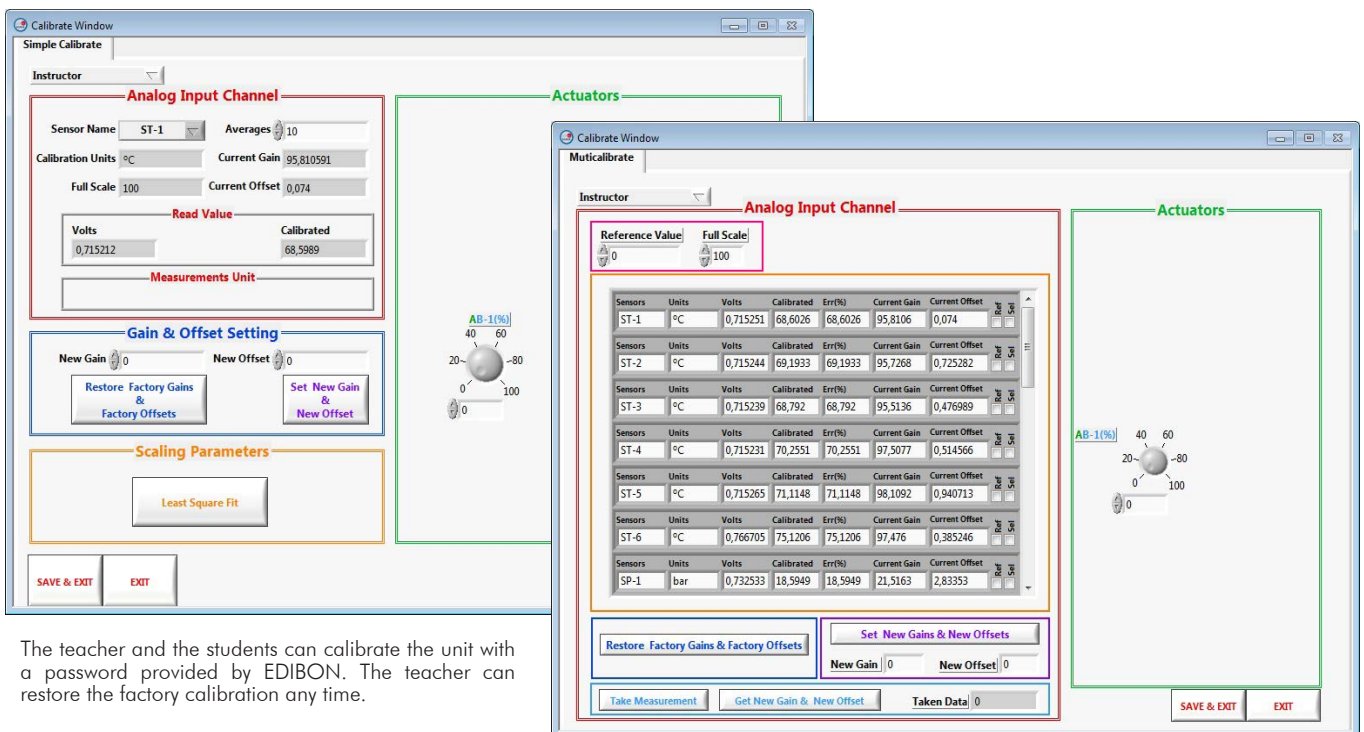
# SOFTWARE MAIN SCREENS

## SCADA Main screen



- ⓘ Main software operation possibilities.
- Ⓜ Sensors displays, real time values, and extra output parameters. Sensors: ST=Temperature sensor. SP=Pressure sensor. SC=Flow sensor.
- Ⓜ Actuators controls. Actuators: AB=Pump. AN=Level switch.
- Ⓜ Channel selection and other plot parameters.
- Ⓜ Real time graphics displays.

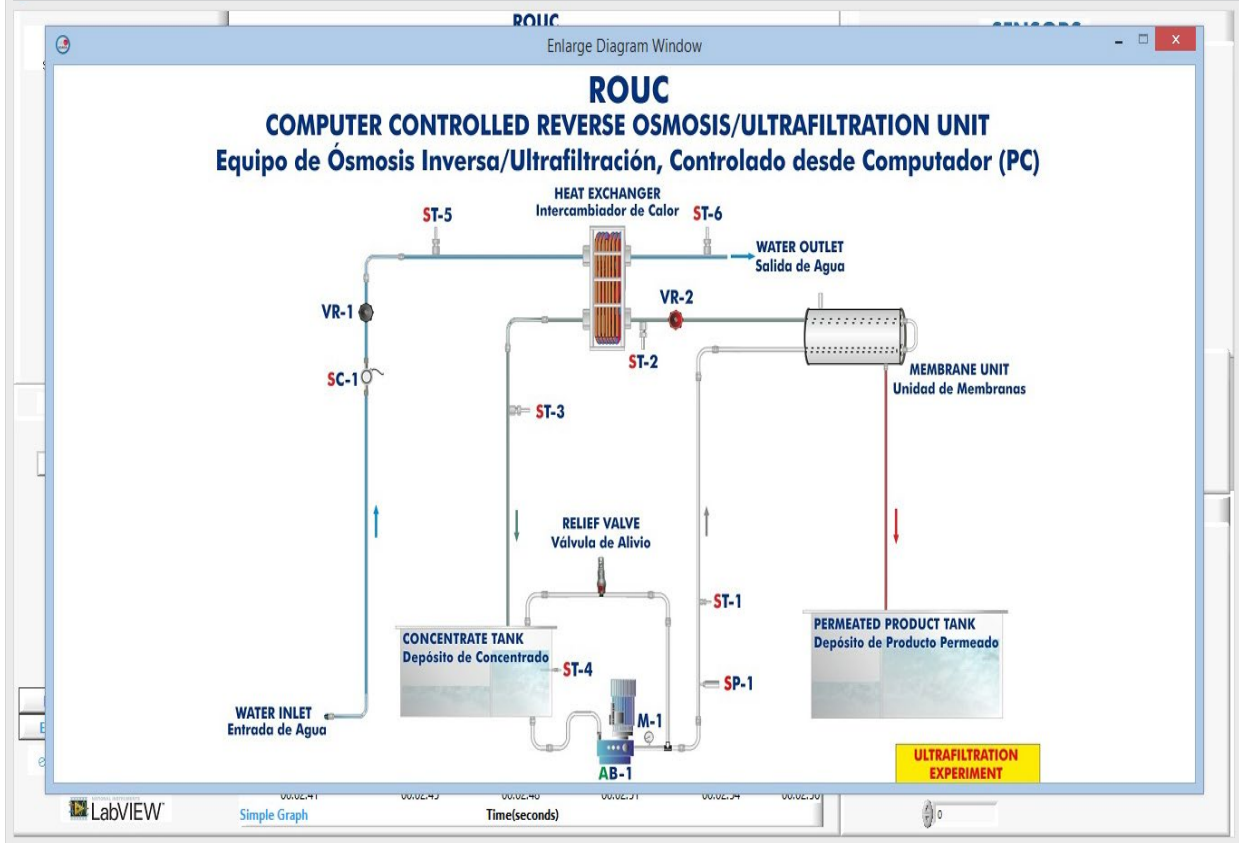
## Software for Sensors Calibration Example of screens



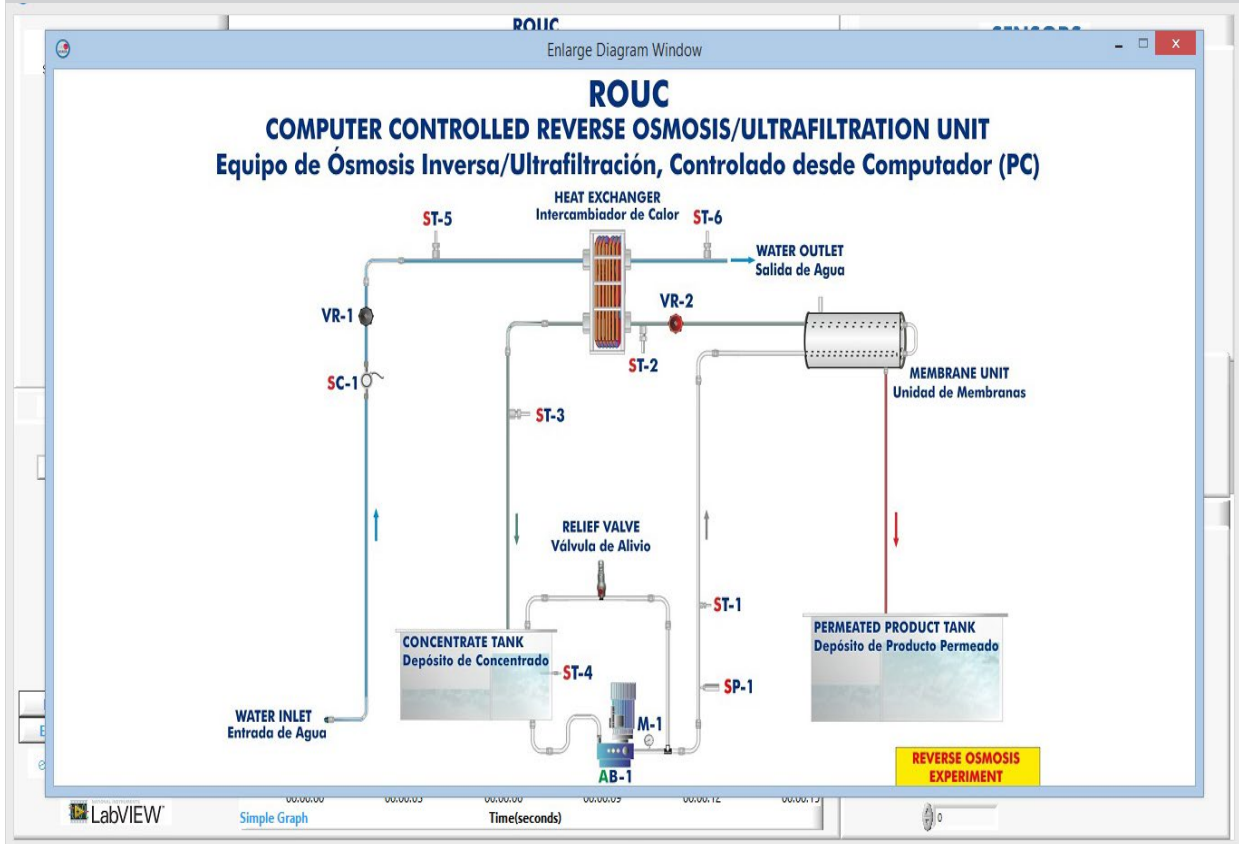
The teacher and the students can calibrate the unit with a password provided by EDIBON. The teacher can restore the factory calibration any time.

## SOME REAL RESULTS OBTAINED FROM THIS UNIT

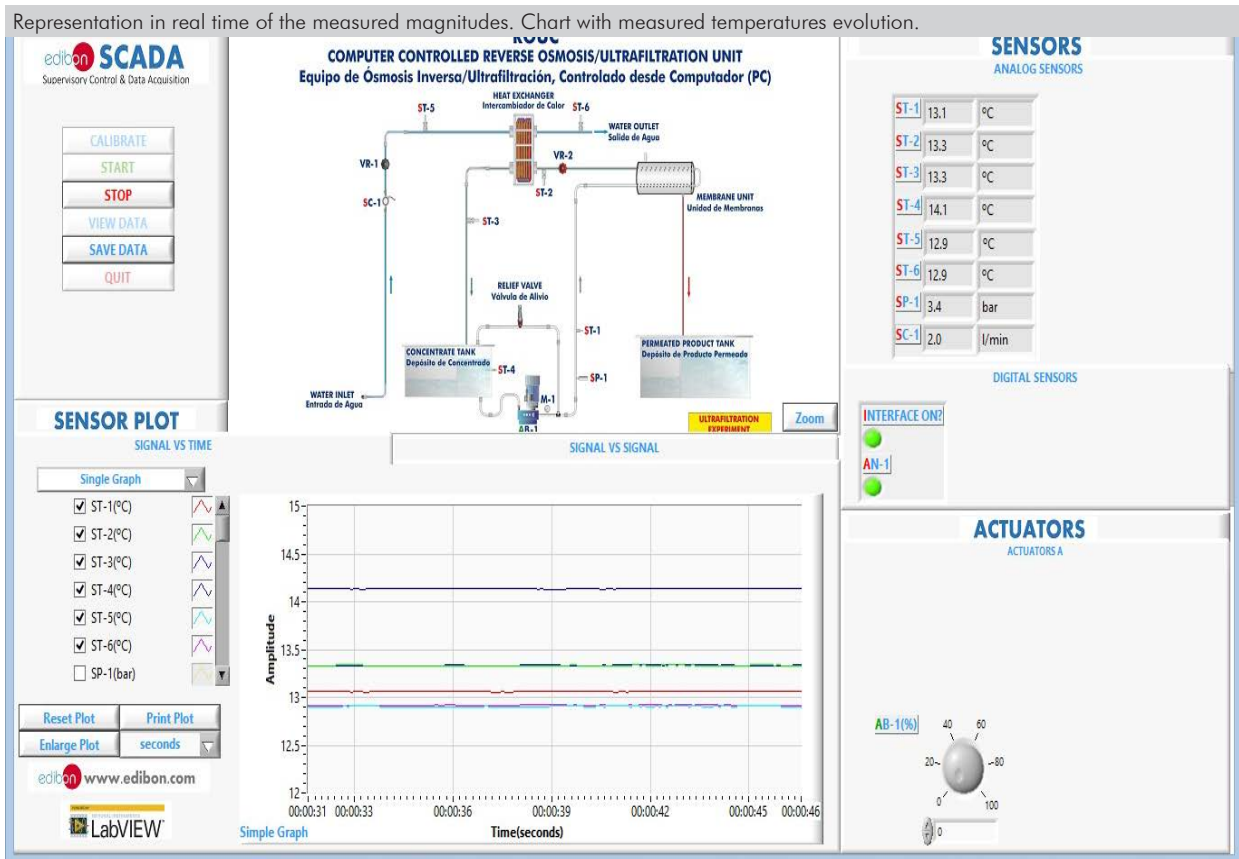
The type of practical exercise to be performed can be selected when the software is started. Diagram for the ultrafiltration practical exercise.



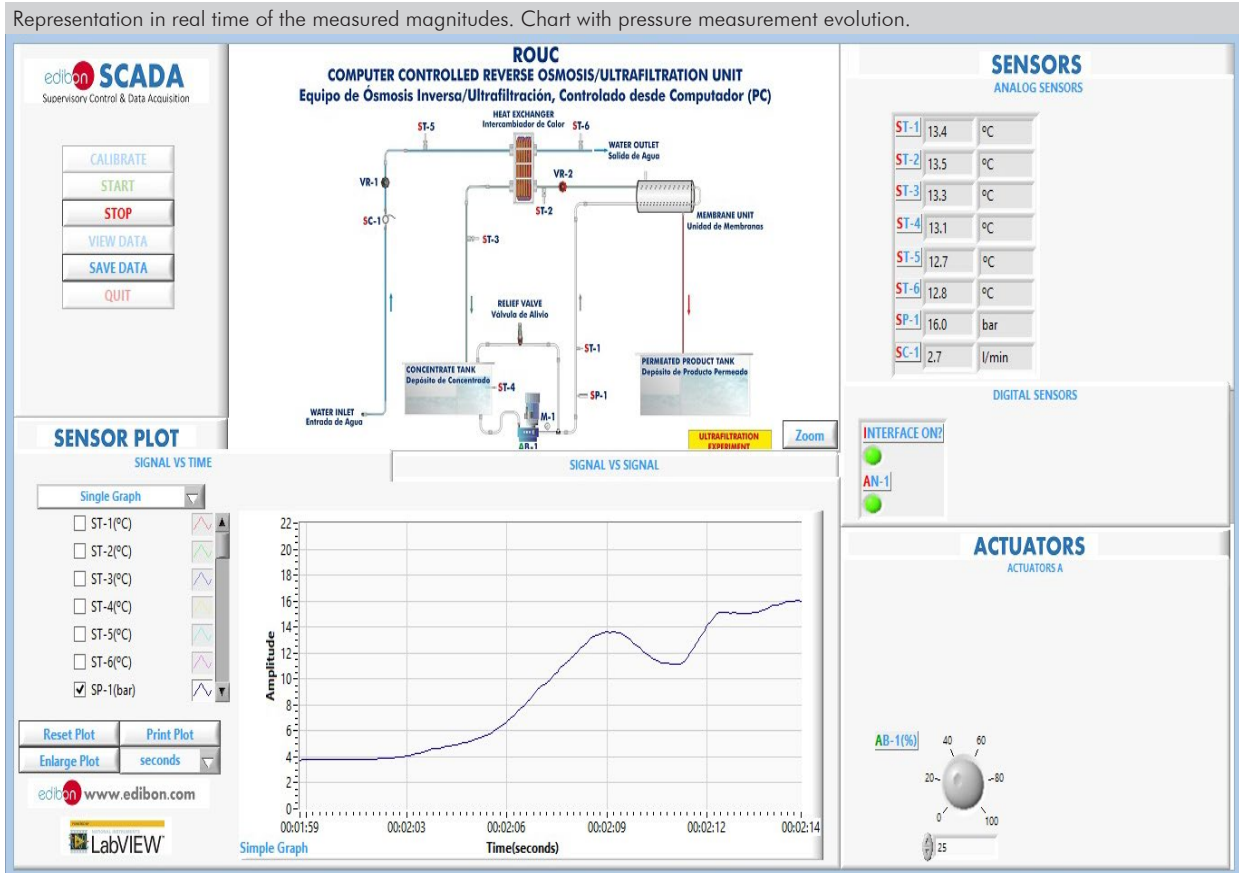
The type of practical exercise to be performed can be selected when the software is started. Diagram for the reverse osmosis practical exercise.



Representation in real time of the measured magnitudes. Chart with measured temperatures evolution.



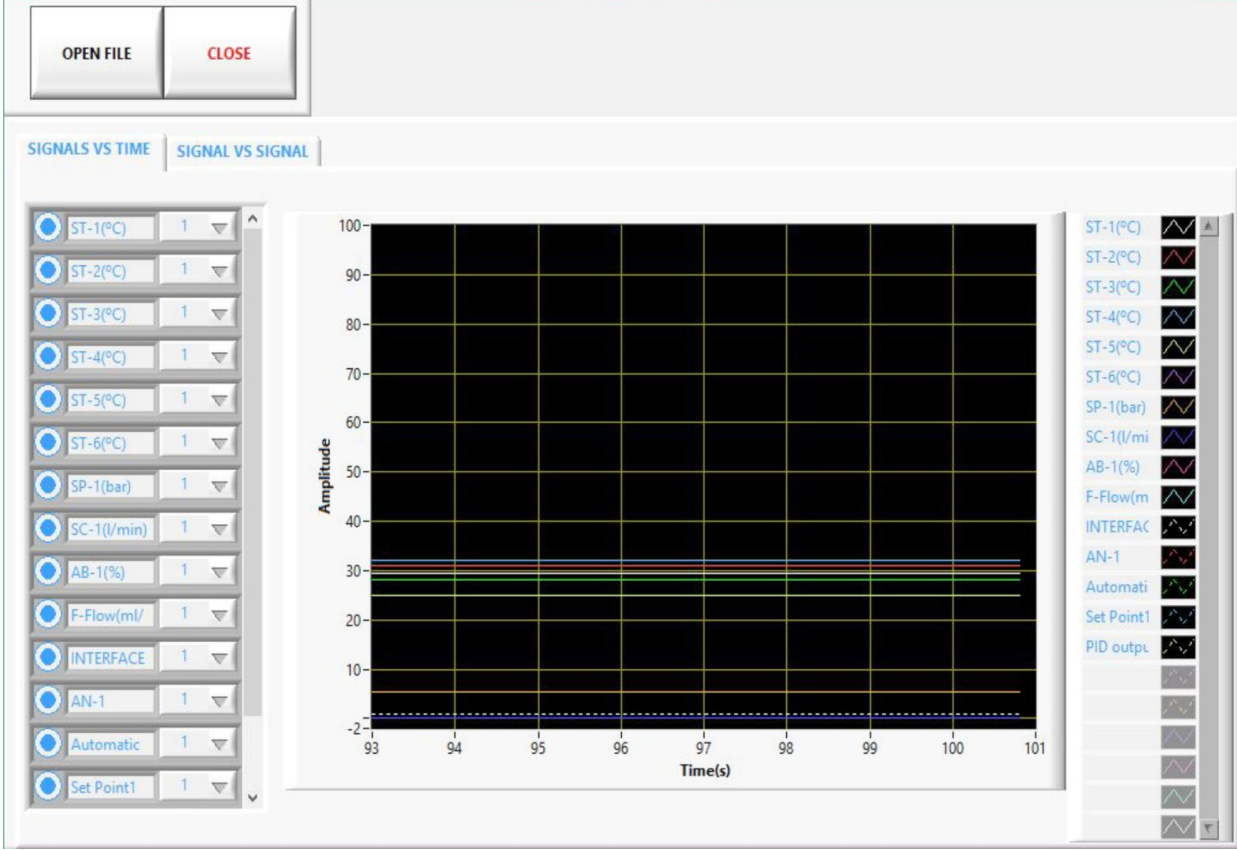
Representation in real time of the measured magnitudes. Chart with pressure measurement evolution.



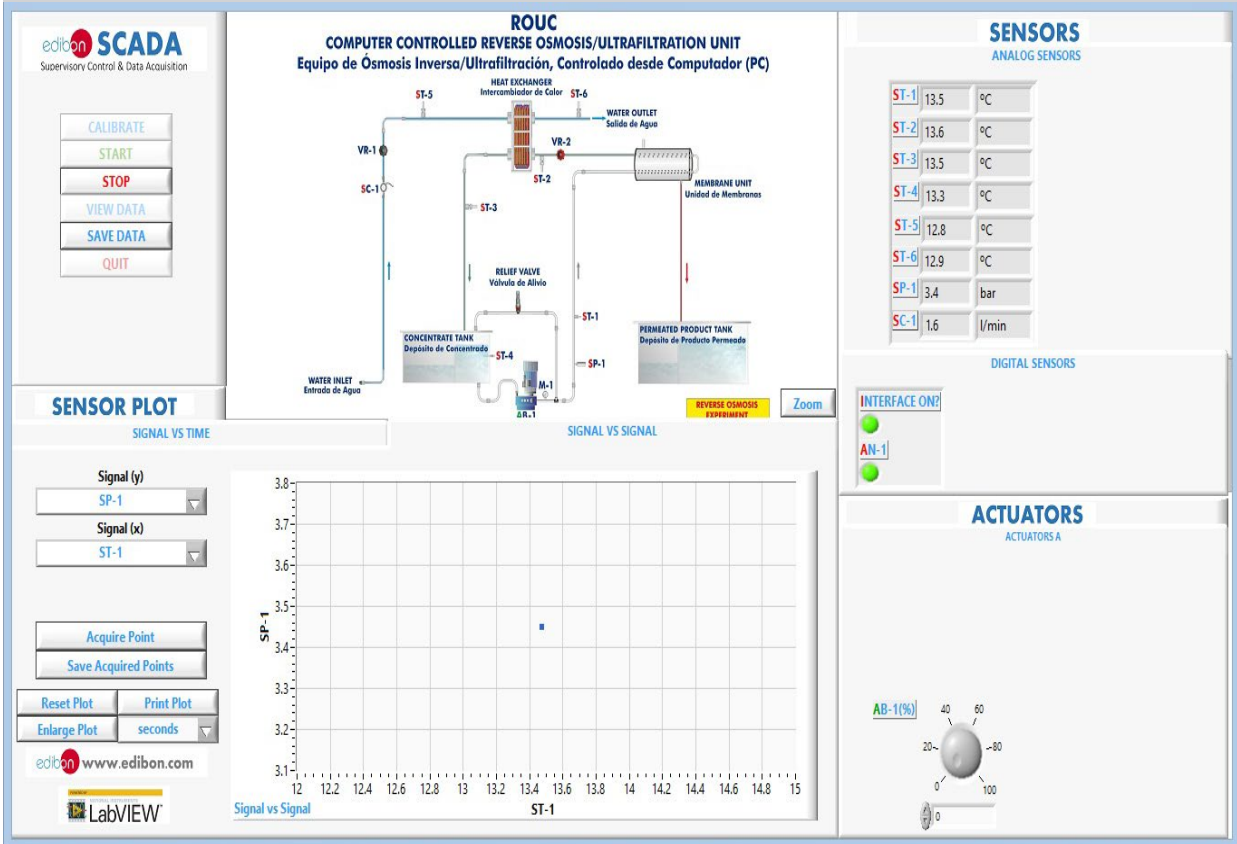


Some **real** results obtained from this Unit

Visualization and representation of saved data.



Signal versus signal chart where any of the measured variables can be represented.



## COMPLETE TECHNICAL SPECIFICATIONS (for optional items)

Additionally to the main items (1 to 6) described, we can offer, as optional, other items from 7 to 11.

All these items try to give more possibilities for:

- a) Industrial configuration. (PLC)
- b) Technical and Vocational Education configuration. (ICAI and FSS)
- c) Multipost Expansions options. (MINI ESN and ESN)

### a) Industrial configuration

#### ⑦ PLC. Industrial Control using PLC (it includes PLC-PI Module plus PLC-SOF Control Software):

##### -PLC-PI. PLC Module:

**Metallic box.**

**Circuit diagram in the module front panel.**

Front panel:

##### Digital inputs (X) and Digital outputs (Y) block:

16 Digital inputs, activated by switches and 16 LEDs for confirmation (red).

14 Digital outputs (through SCSI connector) with 14 LEDs for message (green).

##### Analog inputs block:

16 Analog inputs (-10 V. to + 10 V.) (through SCSI connector).

##### Analog outputs block:

4 Analog outputs (-10 V. to + 10 V.) (through SCSI connector).

##### Touch screen:

High visibility and multiple functions. Display of a highly visible status. Recipe function. Bar graph function. Flow display function. Alarm list. Multi language function. True type fonts.

Back panel:

Power supply connector. Fuse 2A. RS-232 connector to PC. USB 2.0 connector to PC.

Inside:

Power supply outputs: 24 Vdc, 12 Vdc, -12 Vdc, 12 Vdc variable.

##### Panasonic PLC:

High-speed scan of 0.32  $\mu$ sec. for a basic instruction.

Program capacity of 32 Ksteps, with a sufficient comment area.

Power supply input (100 to 240 V AC).

DC input: 16 (24 V DC).

Relay output: 14.

##### High-speed counter.

Multi-point PID control.

##### Digital inputs/outputs and analog inputs/outputs Panasonic modules.

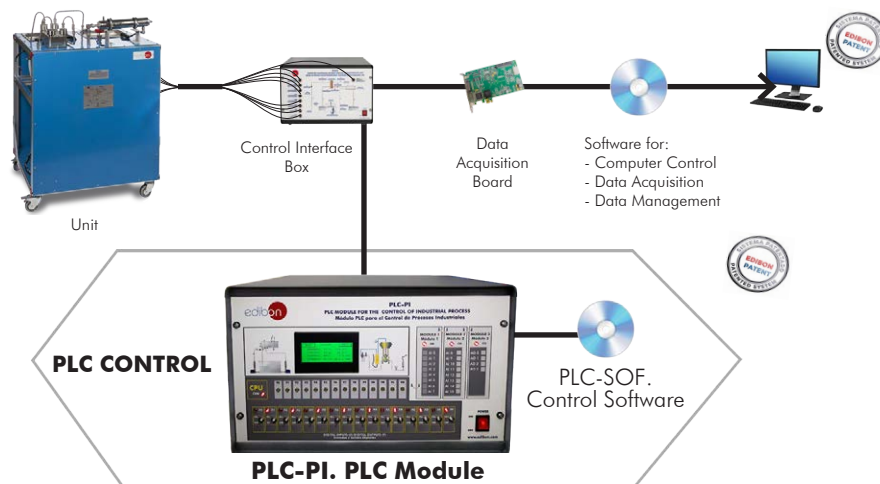
Communication RS232 wire to computer (PC).

Dimensions: 490 x 330 x 310 mm. approx. (19.29 x 12.99 x 12.20 inches approx.). Weight: 30 Kg. approx. (66 pounds approx.).

##### -ROUC/PLC-SOF. PLC Control Software:

**For this particular unit, always included with PLC supply.**

The software has been designed using Labview and it follows the unit operation procedure and linked with the Control Interface Box used in the Computer Controlled Reverse Osmosis/Ultrafiltration Unit (ROUC).



#### Practices to be done with PLC-PI:

- 1.- Control of the particular unit process through the control interface box without the computer.
- 2.- Visualization of all the sensors values used in the particular unit process.
- 3.- Calibration of all sensors included in the particular unit process.
- 4.- Hand on of all the actuators involved in the particular unit process.
- 5.- Realization of different experiments, in automatic way, without having in front the particular unit. (These experiments can be decided previously).
- 6.- Simulation of outside actions, in the cases do not exist hardware elements. (Example: test of complementary tanks, complementary industrial environment to the process to be studied, etc).
- 7.- PLC hardware general use.
- 8.- PLC process application for the particular unit.
- 9.- PLC structure.
- 10.- PLC inputs and outputs configuration.
- 11.- PLC configuration possibilities.
- 12.- PLC program languages.
- 13.- PLC different programming standard languages (ladder diagram (LD), structured text (ST), instructions list (IL), sequential function chart (SFC), function block diagram (FBD)).
- 14.- New configuration and development of new process.
- 15.- Hand on an established process.
- 16.- To visualize and see the results and to make comparisons with the particular unit process.
- 17.- Possibility of creating new process in relation with the particular unit.
- 18.- PLC Programming Exercises.
- 19.- Own PLC applications in accordance with teacher and student requirements.

b) Technical and Vocational Education configuration

⑧ **ROUC/ICAI. Interactive Computer Aided Instruction Software System.**

This complete software package consists of an Instructor Software (EDIBON Classroom Manager - ECM-SOF) totally integrated with the Student Software (EDIBON Student Labsoft - ESL-SOF). Both are interconnected so that the teacher knows at any moment what is the theoretical and practical knowledge of the students.

This software is optional and can be used additionally to items (1 to 6).

- **ECM-SOF. EDIBON Classroom Manager (Instructor Software).**

ECM-SOF is the application that allows the Instructor to register students, manage and assign tasks for workgroups, create own content to carry out Practical Exercises, choose one of the evaluation methods to check the Student knowledge and monitor the progression related to the planned tasks for individual students, workgroups, units, etc... so the teacher can know in real time the level of understanding of any student in the classroom.

Innovative features:

- User Data Base Management.
- Administration and assignment of Workgroup, Task and Training sessions.
- Creation and Integration of Practical Exercises and Multimedia Resources.
- Custom Design of Evaluation Methods.
- Creation and assignment of Formulas & Equations.
- Equation System Solver Engine.
- Updatable Contents.
- Report generation, User Progression Monitoring and Statistics.

- **ESL-SOF. EDIBON Student Labsoft (Student Software).**

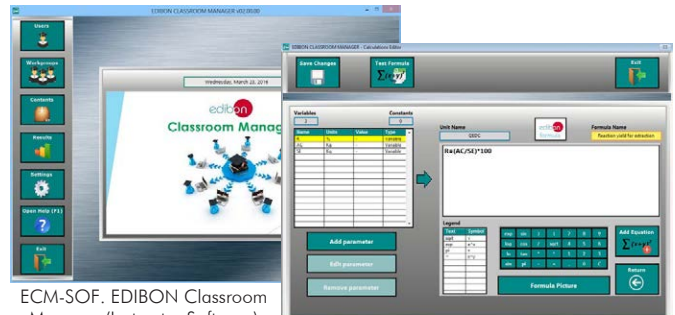
ESL-SOF is the application addressed to the Students that helps them to understand theoretical concepts by means of practical exercises and to prove their knowledge and progression by performing tests and calculations in addition to Multimedia Resources. Default planned tasks and an Open workgroup are provided by EDIBON to allow the students start working from the first session. Reports and statistics are available to know their progression at any time, as well as explanations for every exercise to reinforce the theoretically acquired technical knowledge.

Innovative features:

- Student Log-In & Self-Registration.
- Existing Tasks checking & Monitoring.
- Default contents & scheduled tasks available to be used from the first session.
- Practical Exercises accomplishment by following the Manual provided by EDIBON.
- Evaluation Methods to prove your knowledge and progression.
- Test self-correction.
- Calculations computing and plotting.
- Equation System Solver Engine.
- User Monitoring Learning & Printable Reports.
- Multimedia-Supported auxiliary resources.

For more information see ICAI catalogue. Click on the following link:  
[www.edibon.com/en/interactive-computer-aided-instruction-software](http://www.edibon.com/en/interactive-computer-aided-instruction-software)

Instructor Software



ECM-SOF. EDIBON Classroom Manager (Instructor Software) Application Main Screen

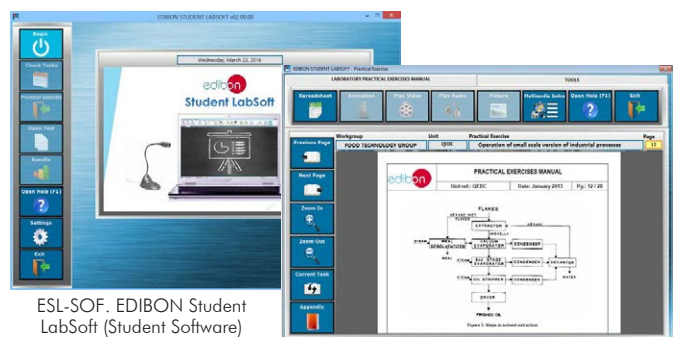
ECAL. EDIBON Calculations Program Package - Formula Editor Screen



ERS. EDIBON Results & Statistics Program Package - Student Scores Histogram

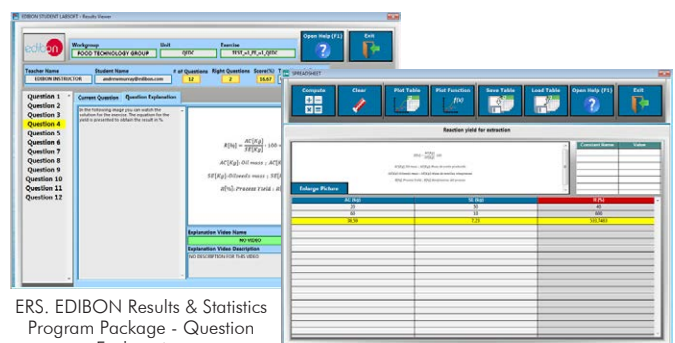
ETTE. EDIBON Training Test & Exam Program Package - Main Screen with Numeric Result Question

Student Software



ESL-SOF. EDIBON Student LabSoft (Student Software) Application Main Screen

EPE. EDIBON Practical Exercise Program Package Main Screen



ERS. EDIBON Results & Statistics Program Package - Question Explanation

ECAL. EDIBON Calculations Program Package Main Screen

⑨ **ROUC/FSS. Faults Simulation System.**

Faults Simulation System (FSS) is a Software package that simulates several faults in any EDIBON Computer Controlled Unit. It is useful for Technical and Vocational level.

The "FAULTS" mode consists in causing several faults in the unit normal operation. The student must find them and solve them. There are several kinds of faults that can be grouped in the following sections:

Faults affecting the sensors measurement:

- An incorrect calibration is applied to them.
- Non-linearity.

Faults affecting the actuators:

- Actuators channels interchange at any time during the program execution.
- Response reduction of an actuator.

Faults in the controls execution:

- Inversion of the performance in ON/OFF controls.
- Reduction or increase of the calculated total response.
- The action of some controls is annulled.

On/off faults:

- Several on/off faults can be included.

Example of some screens



For more information see FSS catalogue. Click on the following link:

[www.edibon.com/en/fault-simulation-system](http://www.edibon.com/en/fault-simulation-system)

c) Multipost Expansions options

⑩ **MINI ESN. EDIBON Mini Scada-Net System for being used with EDIBON Teaching Units.**

MINI ESN. EDIBON Mini Scada-Net System allows up to 30 students to work with a Teaching Unit in any laboratory, simultaneously. It is useful for both, Higher Education and/or Technical and Vocational Education.

The MINI ESN system consists of the adaptation of any EDIBON Computer Controlled Unit with SCADA integrated in a local network.

This system allows to view/control the unit remotely, from any computer integrated in the local net (in the classroom), through the main computer connected to the unit. Then, the number of possible users who can work with the same unit is higher than in an usual way of working (usually only one).

Main characteristics:

- It allows up to 30 students to work simultaneously with the EDIBON Computer Controlled Unit with SCADA, connected in a local net.
- Open Control + Multicontrol + Real Time Control + Multi Student Post.
- Instructor controls and explains to all students at the same time.
- Any user/student can work doing "real time" control/multicontrol and visualisation.
- Instructor can see in the computer what any user/student is doing in the unit.
- Continuous communication between the instructor and all the users/students connected.

Main advantages:

- It allows an easier and quicker understanding.
- This system allows you can save time and cost.
- Future expansions with more EDIBON Units.

For more information see MINI ESN catalogue. Click on the following link:

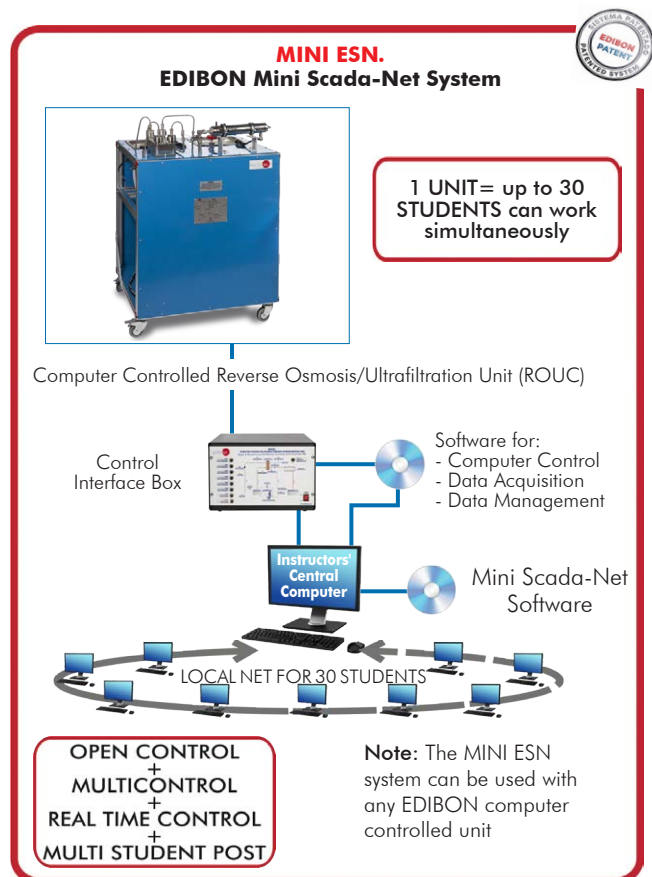
[www.edibon.com/en/edibon-scada-net](http://www.edibon.com/en/edibon-scada-net)

⑪ **ESN. EDIBON Scada-Net Systems.**

This unit can be integrated, in the future, into a Complete Laboratory with many Units and many Students.

For more information see ESN catalogue. Click on the following link:

[www.edibon.com/en/edibon-scada-net](http://www.edibon.com/en/edibon-scada-net)



## ORDER INFORMATION

### **Main items** (always included in the supply)

Minimum supply always includes:

- ① **Unit: ROUC. Computer Controlled Reverse Osmosis/ Ultrafiltration Unit.**
- ② **ROUC/CIB. Control Interface Box.**
- ③ **DAB. Data Acquisition Board.**
- ④ **ROUC/CCSOF. Computer Control + Data Acquisition + Data Management Software.**
- ⑤ **Cables and Accessories**, for normal operation.
- ⑥ **Manuals.**

**\*IMPORTANT:** Under ROUC we always supply all the elements for immediate running as 1, 2, 3, 4, 5 and 6.

### **Optional items** (supplied under specific order)

#### a) Industrial configuration

- ⑦ **PLC. Industrial Control using PLC (it includes PLC-PI Module plus PLC-SOF Control Software):**
  - PCL-PI. PLC Module.
  - ROUC/PLC-SOF. PLC Control Software.

#### b) Technical and Vocational Education configuration

- ⑧ **ROUC/ICAI. Interactive Computer Aided Instruction Software System.**
- ⑨ **ROUC/FSS. Faults Simulation System.**

#### c) Multipost Expansions options

- ⑩ **MINI ESN. EDIBON Mini Scada-Net System for being used with EDIBON Teaching Units.**
- ⑪ **ESN. EDIBON Scada-Net Systems.**

**① ROUC. Unit:**

Anodized aluminum frame and panels made of painted steel.  
 The unit includes wheels to facilitate its mobility.  
 Main metallic elements made of stainless steel.  
 Diagram in the front panel with distribution of the elements similar to the real one.  
 Rapid changeover from Reverse Osmosis to Ultrafiltration and back.  
 Easy cleaned and maintenance.  
 All elements in contact with the process fluid are constructed from hygienic design materials such as stainless steel, PTFE and silicone rubber.

**Stainless steel feed tank** (15 l approx. capacity).

**Computer controlled three head positive displacement feed pump:**

Maximum flow: 38 l/min.  
 Maximum design pressure: 150 bar; maximum operation pressure: 55 bar.  
 This pump is used to feed product to the membrane module.  
 Flow and pressure adjustable. Variable speed control.  
 The pump has a relief valve to protect the unit.  
 Frequency variator that controls the pump motor.

**Membrane module:**

Two tubular membranes connected in series.  
 Membrane diameter: 12.5 mm.  
 Membrane area: 0.000122 m<sup>2</sup>.  
 Tube volume: 75 ml.  
 Maximum operation pressure: 55 bar.

**Two regulation valves to control the water flow and the effluent flow.**

**Plates heat exchanger for the concentrate.**

**Permeate stainless steel collecting tank** (15 l approx. capacity).

**Instrumentation:**

Six temperature sensors, "J" type.  
 Pressure sensor, range: 0 – 100 bar.  
 Flow sensor (water inlet), range: 0.25 – 6.5 l/min.  
 Level switch.

**Two membranes of each model of the following are supplied:**

RO01: Retention Character (99% NaCl), Process: Reverse Osmosis, max. pressure (45 bar).  
 UF02: Retention Character (20,000 Da), Process: Ultrafiltration, max. pressure (10 bar).  
 UF03: Retention Character (200,000 Da), Process: Ultrafiltration, max. pressure (15 bar).

The complete unit includes as well:

Advanced Real-Time SCADA.  
 Open Control + Multicontrol + Real-Time Control.  
 Specialized EDIBON Control Software based on LabVIEW.  
 National Instruments Data Acquisition board (250 KS/s, kilo samples per second).  
 Calibration exercises, which are included, teach the user how to calibrate a sensor and the importance of checking the accuracy of the sensors before taking measurements.  
 Projector and/or electronic whiteboard compatibility allows the unit to be explained and demonstrated to an entire class at one time.  
 Capable of doing applied research, real industrial simulation, training courses, etc.  
 Remote operation and control by the user and remote control for EDIBON technical support, are always included.  
 Totally safe, utilizing 4 safety systems (Mechanical, Electrical, Electronic & Software).  
 Designed and manufactured under several quality standards.  
 Optional ICAI software to create, edit and carry out practical exercises, tests, exams, calculations, etc. Apart from monitoring user's knowledge and progress reached.  
 This unit has been designed for future expansion and integration. A common expansion is the EDIBON Scada-Net (ESN) System which enables multiple students to simultaneously operate many units in a network.

**② ROUC/CIB. Control Interface Box:**

The Control Interface Box is part of the SCADA system.  
 Control interface box with process diagram in the front panel.  
 The unit control elements are permanently computer controlled.  
 Simultaneous visualization in the computer of all parameters involved in the process.  
 Calibration of all sensors involved in the process.  
 Real time curves representation about system responses.  
 All the actuators' values can be changed at any time from the keyboard allowing the analysis about curves and responses of the whole process.  
 Shield and filtered signals to avoid external interferences.  
 Real time computer control with flexibility of modifications from the computer keyboard of the parameters, at any moment during the process.  
 Real time computer control for parameters involved in the process simultaneously.  
 Open control allowing modifications, at any moment and in real time, of parameters involved in the process simultaneously.  
 Three safety levels, one mechanical in the unit, another electronic in the control interface and the third one in the control software.

**③ DAB. Data Acquisition Board:**

The Data Acquisition board is part of the SCADA system.  
 PCI Express Data acquisition board (National Instruments) to be placed in a computer slot.  
 Analog input: Channels= 16 single-ended or 8 differential. Resolution=16 bits, 1 in 65536. Sampling rate up to: 250 KS/s (kilo samples per second).  
 Analog output: Channels=2. Resolution=16 bits, 1 in 65536.  
 Digital Input/Output: Channels=24 inputs/outputs.  
 The Data Acquisition board model may change at any moment, providing the same or better features than those required for the unit.

**④ ROUC/CCSOF. Computer Control + Data Acquisition + Data Management Software:**

The three softwares are part of the SCADA system.  
 Compatible with the industry standards.  
 Flexible, open and multicontrol software, developed with actual windows graphic systems, acting simultaneously on all process parameters.  
 Management, processing, comparison and storage of data.  
 Sampling velocity up to 250 KS/s (kilo samples per second).  
 Calibration system for the sensors involved in the process.  
 It allows the registration of the alarms state and the graphic representation in real time.  
 Open software, allowing the teacher to modify texts, instructions. Teacher's and student's passwords to facilitate the teacher's control on the student, and allowing the access to different work levels.  
 This unit allows the 30 students of the classroom to visualize simultaneously all the results and the manipulation of the unit, during the process, by using a projector or an electronic whiteboard.

**⑤ Cables and Accessories, for normal operation.**

**⑥ Manuals:**

This unit is supplied with 8 manuals: Required Services, Assembly and Installation, Interface and Control Software, Starting-up, Safety, Maintenance, Calibration & Practices Manuals.

### Exercises and Practical Possibilities to be done with the Main Items

- 1.- Practical training in ultrafiltration and reverse osmosis processing techniques.
- 2.- Protein standardization in the production of fermented milk products such as concentration of skimmed milk for yogurt production.
- 3.- Pre-concentration of milk for cheese manufacture.
- 4.- Concentration of fruit juices.
- 5.- Clarification of fruit juices.
- 6.- Water potabilization.
- 7.- Demonstration of the effect of varying the following process parameters on separation performance:
  - Process pressure.
  - Product flow rate.
  - Process temperature.

Additional practical possibilities:

- 8.- Sensors calibration.
- 9.- Applications of concentration, clarification, fractionation and standardization of milk, fruit juices, vegetables juices, etc.
- 10.-Treatment of effluent.
- 11.-Membrane cleaning and maintenance.
- 12.-Enzyme, antibiotics and organic acids' recovery in permeate.

Other possibilities to be done with this Unit:

- 13.-Many students view results simultaneously.

To view all results in real time in the classroom by means of a projector or an electronic whiteboard.

- 14.-Open Control, Multicontrol and Real Time Control.

This unit allows intrinsically and/or extrinsically to change the span, gains; proportional, integral, derivative parameters; etc, in real time.

- 15.-The Computer Control System with SCADA allows a real industrial simulation.
  - 16.-This unit is totally safe as uses mechanical, electrical and electronic, and software safety devices.
  - 17.-This unit can be used for doing applied research.
  - 18.-This unit can be used for giving training courses to Industries even to other Technical Education Institutions.
  - 19.-Control of the ROUC unit process through the control interface box without the computer.
  - 20.-Visualization of all the sensors values used in the ROUC unit process.
- By using PLC-PI additional 19 more exercises can be done.
  - Several other exercises can be done and designed by the user.

## TENDER SPECIFICATIONS (for optional items)

### a) Industrial configuration

#### ⑦ **PLC. Industrial Control using PLC** (it includes PLC-PI Module plus PLC-SOF Control Software):

##### **-PLC-PI. PLC Module:**

Metallic box.

Circuit diagram in the module front panel.

Digital inputs (X) and Digital outputs (Y) block: 16 Digital inputs. 14 Digital outputs.

Analog inputs block: 16 Analog inputs.

Analog outputs block: 4 Analog outputs.

Touch screen.

Panasonic PLC:

High-speed scan of 0.32  $\mu$ sec. Program capacity of 32 Ksteps. High-speed counter. Multi-point PID control.

Digital inputs/outputs and analog inputs/outputs Panasonic modules.

##### **-ROUC/PLC-SOF. PLC Control Software:**

For this particular unit, always included with PLC supply.

##### **Practices to be done with PLC-PI:**

- 1.- Control of the particular unit process through the control interface box without the computer.
- 2.- Visualization of all the sensors values used in the particular unit process.
- 3.- Calibration of all sensors included in the particular unit process.
- 4.- Hand on of all the actuators involved in the particular unit process.
- 5.- Realization of different experiments, in automatic way, without having in front the particular unit. (These experiments can be decided previously).
- 6.- Simulation of outside actions, in the cases do not exist hardware elements. (Example: test of complementary tanks, complementary industrial environment to the process to be studied, etc).
- 7.- PLC hardware general use.
- 8.- PLC process application for the particular unit.
- 9.- PLC structure.
- 10.- PLC inputs and outputs configuration.
- 11.- PLC configuration possibilities.
- 12.- PLC program languages.
- 13.- PLC different programming standard languages (ladder diagram (LD), structured text (ST), instructions list (IL), sequential function chart (SFC), function block diagram (FBD)).
- 14.- New configuration and development of new process.
- 15.- Hand on an established process.
- 16.- To visualize and see the results and to make comparisons with the particular unit process.
- 17.- Possibility of creating new process in relation with the particular unit.
- 18.- PLC Programming Exercises.
- 19.- Own PLC applications in accordance with teacher and student requirements.

### b) Technical and Vocational Education configuration

#### ⑧ **ROUC/ICAI. Interactive Computer Aided Instruction Software System.**

This complete software package consists of an Instructor Software (EDIBON Classroom Manager - ECM-SOF) totally integrated with the Student Software (EDIBON Student Labsoft - ESL-SOF). Both are interconnected so that the teacher knows at any moment what is the theoretical and practical knowledge of the students.

- ECM-SOF. EDIBON Classroom Manager (Instructor Software).

ECM-SOF is the application that allows the Instructor to register students, manage and assign tasks for workgroups, create own content to carry out Practical Exercises, choose one of the evaluation methods to check the Student knowledge and monitor the progression related to the planned tasks for individual students, workgroups, units, etc...so the teacher can know in real time the level of understanding of any student in the classroom.

Innovative features:

- User Data Base Management.
- Administration and assignment of Workgroup, Task and Training sessions.
- Creation and Integration of Practical Exercises and Multimedia Resources.
- Custom Design of Evaluation Methods.
- Creation and assignment of Formulas & Equations.
- Equation System Solver Engine.
- Updatable Contents.
- Report generation, User Progression Monitoring and Statistics.

- ESL-SOF. EDIBON Student Labsoft (Student Software).

ESL-SOF is the application addressed to the Students that helps them to understand theoretical concepts by means of practical exercises and to prove their knowledge and progression by performing tests and calculations in addition to Multimedia Resources. Default planned tasks and an Open workgroup are provided by EDIBON to allow the students start working from the first session. Reports and statistics are available to know their progression at any time, as well as explanations for every exercise to reinforce the theoretically acquired technical knowledge.

Innovative features:

- Student Log-In & Self-Registration.
- Existing Tasks checking & Monitoring.
- Default contents & scheduled tasks available to be used from the first session.
- Practical Exercises accomplishment by following the Manual provided by EDIBON.
- Evaluation Methods to prove your knowledge and progression.
- Test self-correction.
- Calculations computing and plotting.
- Equation System Solver Engine.
- User Monitoring Learning & Printable Reports.
- Multimedia-Supported auxiliary resources.



⑨ **ROUC/FSS. Faults Simulation System.**

Faults Simulation System (FSS) is a Software package that simulates several faults in any EDIBON Computer Controlled Unit. The "FAULTS" mode consists in causing several faults in the unit normal operation. The student must find them and solve them. There are several kinds of faults that can be grouped in the following sections:

Faults affecting the sensors measurement:

- An incorrect calibration is applied to them.
- Non-linearity.

Faults affecting the actuators:

- Actuators channels interchange at any time during the program execution.
- Response reduction of an actuator.

Faults in the controls execution:

- Inversion of the performance in ON/OFF controls.
- Reduction or increase of the calculated total response.
- The action of some controls is annulled.

On/off faults:

- Several on/off faults can be included.

c) Multipost Expansions options

⑩ **MINI ESN. EDIBON Mini Scada-Net System for being used with EDIBON Teaching Units.**

MINI ESN. EDIBON Mini Scada-Net System allows up to 30 students to work with a Teaching Unit in any laboratory, simultaneously. The MINI ESN system consists of the adaptation of any EDIBON Computer Controlled Unit with SCADA integrated in a local network. This system allows to view/control the unit remotely, from any computer integrated in the local net (in the classroom), through the main computer connected to the unit.

Main characteristics:

- It allows up to 30 students to work simultaneously with the EDIBON Computer Controlled Unit with SCADA, connected in a local net.
- Open Control + Multicontrol + Real Time Control + Multi Student Post.
- Instructor controls and explains to all students at the same time.
- Any user/student can work doing "real time" control/multicontrol and visualisation.
- Instructor can see in the computer what any user/student is doing in the unit.
- Continuous communication between the instructor and all the users/students connected.

Main advantages:

- It allows an easier and quicker understanding.
- This system allows you can save time and cost.
- Future expansions with more EDIBON Units.

The system basically will consist of:

This system is used with a Computer Controlled Unit.

- Instructor's computer.
- Students' computers.
- Local Network.
- Unit-Control Interface adaptation.
- Unit Software adaptation.
- Webcam.
- MINI ESN Software to control the whole system.
- Cables and accessories required for a normal operation.

\* Specifications subject to change without previous notice, due to the convenience of improvement of the product.



C/ Julio Cervera, 10-12-14. Móstoles Tecnológico.  
28935 MÓSTOLES. (Madrid). ESPAÑA - SPAIN.  
Tel.: 34-91-6199363 Fax: 34-91-6198647  
E-mail: edibon@edibon.com Web: **www.edibon.com**

Edition: ED01/18  
Date: January/2018

REPRESENTATIVE:

